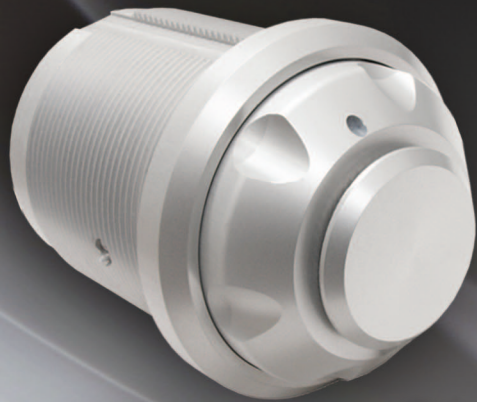


# Introducing CyberLock® Flex System



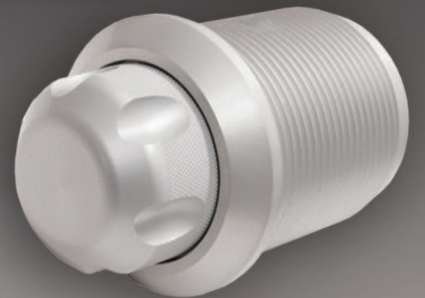
CyberKey Vault WR



Display Module



Knob Module



RFID Module



**CyberLock modules bring a whole new level of flexibility to the award-winning CyberLock electronic access control solution.**

### **Take It Outside . . .**

CyberLock Flex System Modules are made to perform in the most challenging outdoor conditions. These all-weather individual key vaults allow you to store CyberKeys both indoors and outdoors – wherever they are needed most.

### **Build It Your Way . . .**

The CyberLock Flex System weatherized vaults can be accessed by using an RFID card, a PIN, or both by installing one or more of the access modules. These modules can be mixed and matched to create a system precisely tailored to the access requirements of your application and site. The choice is yours.

### **Open New Doors . . .**

The CyberLock Flex System is just the beginning of a new CyberLock modular family. Now, integrate with existing access control devices via standard Wiegand interfaces with the new CyberLock Flex System Hub. Everything is managed from the CyberAudit-Web software platform.

# Network Diagram



Joining our award-winning key-centric electronic access control solution is the new CyberLock Flex System. All of the benefits of the CyberLock programmable key and electronic lock are now complemented by this new flexible modular system that not only enables secure outdoor storage of CyberKeys, but integrates with existing access control solutions.

\* Not provided by Videx

## CyberLock Flex System Specifications

### General Specifications

- Temperature: -40° to +185° F (-40° to +85° C)
- Humidity: 0 to 100%
- Altitude: -200' to 15000' MSL

### CyberKey Vault WR

- Dimensions: 4.3" L x 3" D (10.9 cm x 7.6 cm)
- Mounting Hole: 2.65" D (6.7 cm)
- Weight: 1.25 lb (567 g)
- Power: 12v 100mA via RS485 connector from System Hub

### Display Module

- Display Type: 96 x 64 pixel OLED
- Dimensions: 1.75" L x 2" D (4.5 cm x 5 cm)
- Mounting Hole: 1.75" D (4.5 cm)
- Weight: 7 oz (200 g)
- Power: 12v 100mA via RS485 connector from System Hub

### Data Knob Module

- Dimensions: 2.75" L x 3" D (7 cm x 7.6 cm)
- Mounting Hole: 1.75" D (4.5 cm)
- Weight: 8 oz (230 g)
- Power: 12v 100mA via RS485 connector from System Hub

### RFID Reader Module

- Dimensions: 2.25" L x 2" D (5.7 cm x 5 cm)
- Mounting Hole: 1.75" D (4.5 cm)
- Weight: 7 oz (200 g)
- Power: 12v 100mA via RS485 connector from System Hub

### Door Controller Module

- Dimensions: 5" L x 1.4" W x 1" H (12.7 cm x 3.6 cm x 2.5 cm)
- Weight: 6 oz (170 g)
- Power: 12v 100mA via RS485 connector from System Hub

### System Hub

- Dimensions: 6.8" L x 5" W x 1.8" H (17.3 cm x 12.7 cm x 4.6 cm)
- Weight: 1.1 lb (500g)
- Power: 12v 3A via wall power supply



1105 N.E. Circle Blvd., Corvallis, OR 97330  
541-738-5500 • Fax 541-738-5501 • [www.cyberlock.com](http://www.cyberlock.com) • [sales@videx.com](mailto:sales@videx.com)

CyberLock, CyberKey, CyberAudit, and Videx are registered trademarks of Videx, Inc. GCO2849